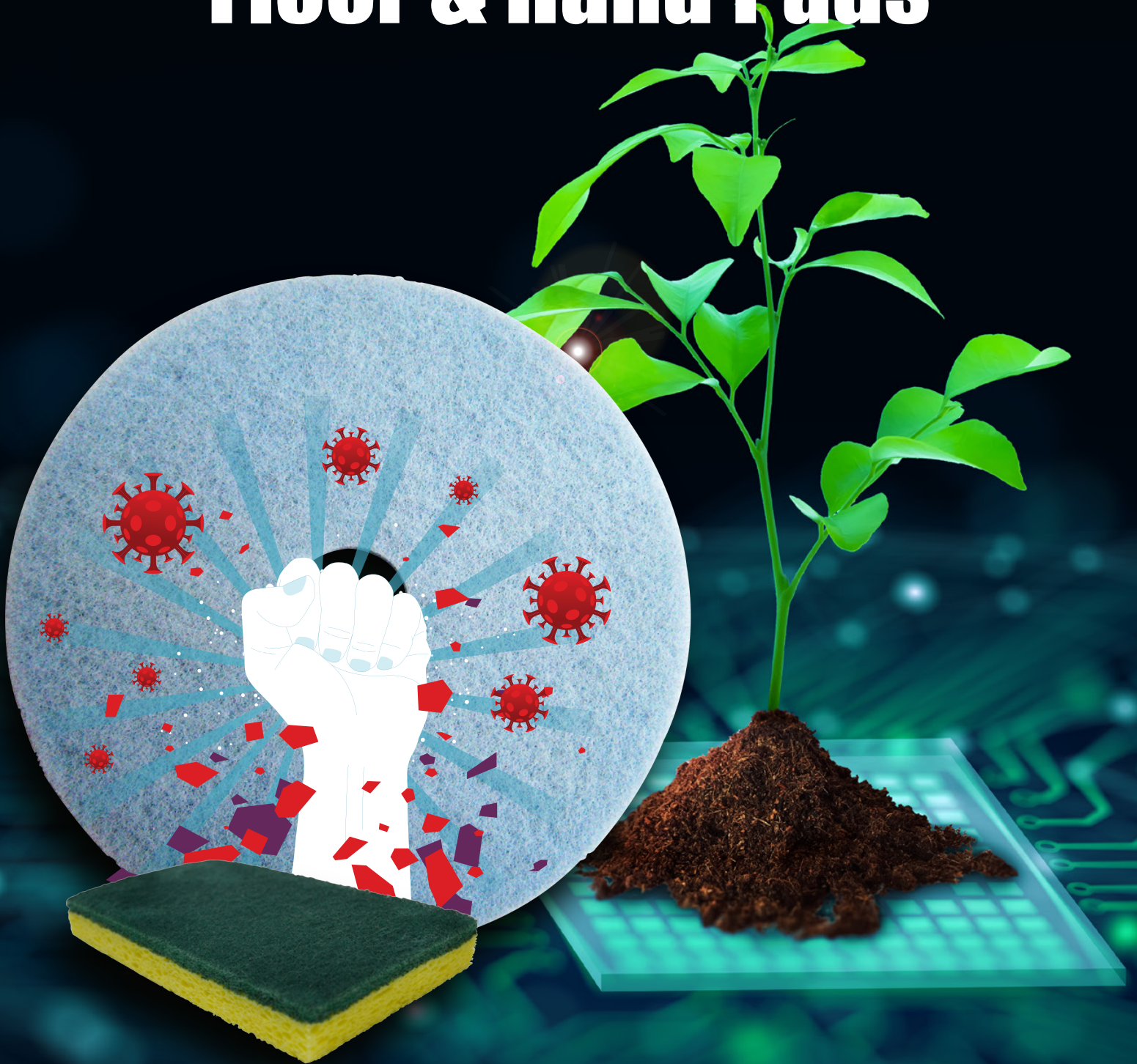


Advantage[®]
Maintenance Products Ltd.

Floor & Hand Pads



**The first and only Green and
Antimicrobial Pads**



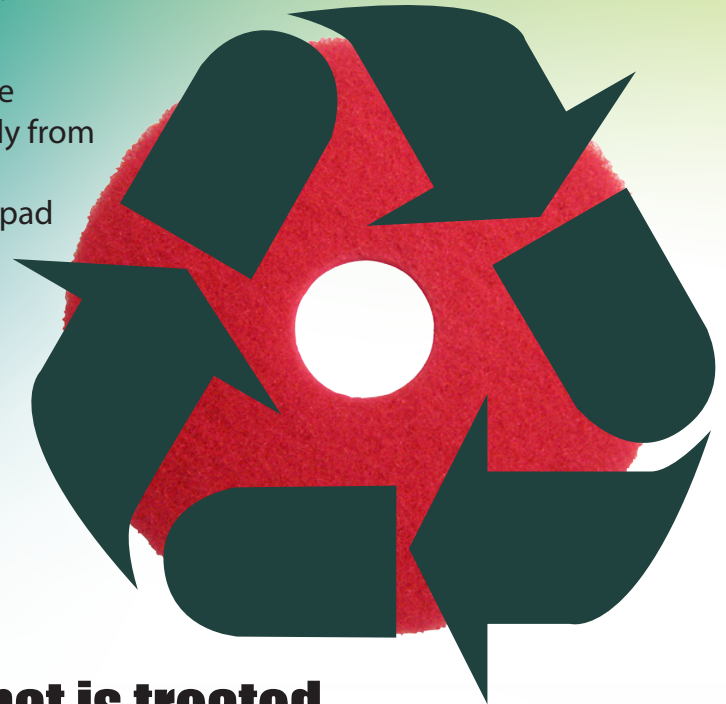
“Certifiably Green”

ACS is the first and only manufacturer to achieve UL (Underwriter’s Laboratory) Certification ensuring full compliance that all pads produced contain 100% Recycled Post Consumer PET Fibre primarily from plastic bottles.

UL is a global independent safety science company with more than a century of expertise innovating solutions. With UL’s environmental claim validations, products come armed with independent third-party confirmation of their compliance with various green codes, standards, and procurement policies including: The Leed® Green Building Rating System, GSA Advantage®, ASHRAE 189.1 and more. This helps product visibility among key specifiers while driving marketplace demand. This is not a certification service.

ACS’s unique process creates pad products made from the highest quality post-consumer recycled PET fibre primarily from plastic water bottles and jugs. This, combined with our proprietary resin binders, produces the Best Eco Friendly pad lines in the industry without added cost to you.

To meet UL Certification our Manufacturing Plant goes through an annual audit of documents back to origin fibre, internal processes of compliance and material routing specifications to each and every pad sold.



The first and only full pad line that is treated with an Antimicrobial Agent baked into the pads.

- The broad-spectrum performance of antimicrobial substances makes them perfect for use in hygiene critical environments.
- Customers are looking to clean, sanitize and disinfect more efficiently to create a healthy indoor environment.
- Floors are high contact surfaces too. Contaminants from coughing, sneezing and even speaking eventually end up on the floor.



Conventional Floor Pads



- Tough, long lasting pads for every floor maintenance job
- Designed and produced to give superior performance on specific floor surfaces
- Use wet or dry with conventional or high speed machines
- All pads are a blend of 100% recycled polyester and/or 100% recycled nylon fibres bonded with a tough, strong, elastic synthetic resin and impregnated with abrasives
- The specific types of fibres and abrasives used are related to the aggressiveness required for the particular floor maintenance procedure
- Each pad is designed for continuous contact with floor surface and is usable on both sides with equal effectiveness
- Open web construction enables easier dirt pick-up
- Centre hole punch-out plug

Black Stripping - For long lasting, heavy duty stripping

Size	Code #	Size	Code #	Size	Code #	Size	Code #
10" ❖	A06-10	13" ❖	A06-13	16" ❖	A06-16	19"	A06-19
11" ❖	A06-11	14" ❖	A06-14	17"	A06-17	20"	A06-20
12" ❖	A06-12	15" ❖	A06-15	18"	A06-18	21" ❖	A06-21

Brown High Productivity - For fast, uniform stripping, wet or dry

Size	Code #	Size	Code #	Size	Code #	Size	Code #
10" ❖	A08-10	13" ❖	A08-13	16" ❖	A08-16	19" ❖	A08-19
11" ❖	A08-11	14" ❖	A08-14	17" ❖	A08-17	20" ❖	A08-20
12" ❖	A08-12	15" ❖	A08-15	18" ❖	A08-18	21" ❖	A08-21

Green Scrubbing - Wet, heavy-duty scrubbing

Size	Code #	Size	Code #	Size	Code #	Size	Code #
10" ❖	A02-10	13" ❖	A02-13	16" ❖	A02-16	19"	A02-19
11" ❖	A02-11	14" ❖	A02-14	17"	A02-17	20"	A02-20
12" ❖	A02-12	15" ❖	A02-15	18"	A02-18	21" ❖	A02-21

Blue Cleaner - Wet, medium duty scrubbing

Size	Code #	Size	Code #	Size	Code #	Size	Code #
10" ❖	A15-10	13" ❖	A15-13	16" ❖	A15-16	19"	A15-19
11" ❖	A15-11	14" ❖	A15-14	17"	A15-17	20"	A15-20
12" ❖	A15-12	15" ❖	A15-15	18"	A15-18	21" ❖	A15-21

Red Buffing - For dry buffing, spray buffing or light duty scrubbing

Size	Code #	Size	Code #	Size	Code #	Size	Code #
10" ❖	A05-10	13" ❖	A05-13	16" ❖	A05-16	19"	A05-19
11" ❖	A05-11	14" ❖	A05-14	17"	A05-17	20"	A05-20
12" ❖	A05-12	15" ❖	A05-15	18"	A05-18	21" ❖	A05-21

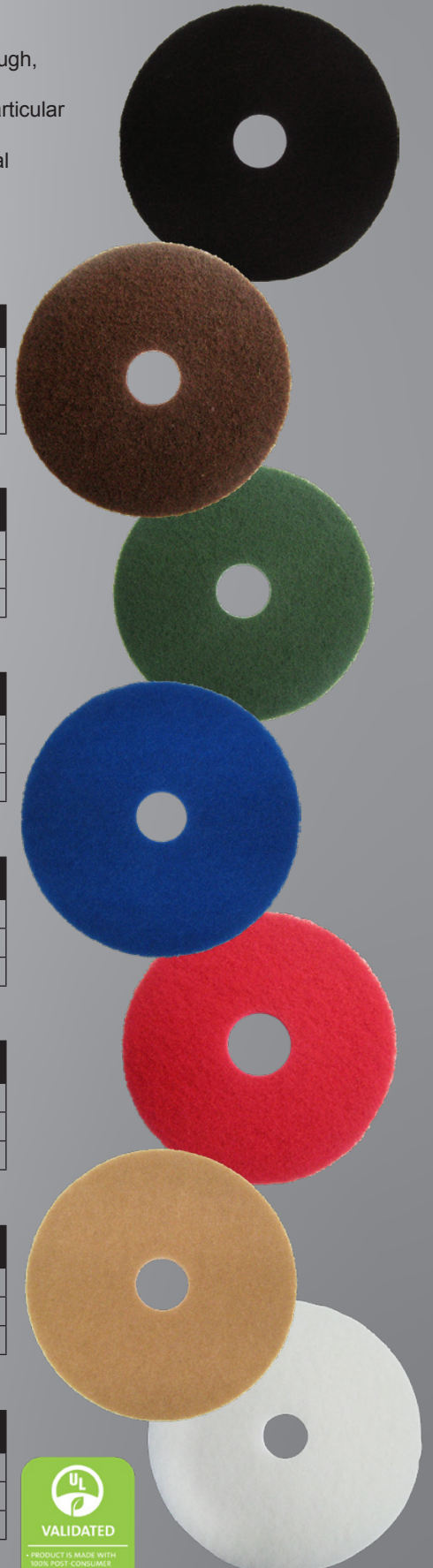
Tan Buffing - For light cleaning and dry buffing

Size	Code #	Size	Code #	Size	Code #	Size	Code #
10" ❖	A75-10	13" ❖	A75-13	16" ❖	A75-16	19" ❖	A75-19
11" ❖	A75-11	14" ❖	A75-14	17" ❖	A75-17	20" ❖	A75-20
12" ❖	A75-12	15" ❖	A75-15	18" ❖	A75-18	21" ❖	A75-21

White Super Polish - For dry polishing or with fine water mist to ensure high gloss

Size	Code #	Size	Code #	Size	Code #	Size	Code #
10" ❖	A01-10	13" ❖	A01-13	16" ❖	A01-16	19"	A01-19
11" ❖	A01-11	14" ❖	A01-14	17"	A01-17	20"	A01-20
12" ❖	A01-12	15" ❖	A01-15	18"	A01-18	21" ❖	A01-21

❖ Non-Stocked Item Requires Special Order



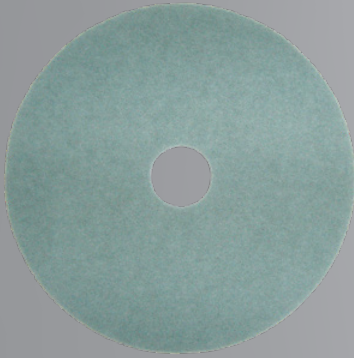


High Speed Floor Pads

RDA advantage™

There's no better way to buy.

- Various types of floor pads for every floor surface and preparation procedure
- A selection from the pads above will produce and maintain the wet-look shine on various floor surfaces when used with the different types of finishes and machines
- Centre hole punch-out plug or with optional ▼ bolt hole for high speed machines



Aqua - Burnishing
(best used on machines up to 3000 RPM)

Thick, soft pads to lightly polish softer floor finishes; ideal for top dressing to a reflective gloss



Blue Velvet - Burnishing
(best used on machines up to 3000 RPM)

Removes black marks without removing finish; great for laying a high-gloss finish in heavy traffic areas



Pink Burnish - Burnishing
(best used on machines up to 3000 RPM)

Restores finish, improves gloss on harder floor surfaces; removes marks and scuffs quickly

Size	Code #	Size	Code #
19" ❖	A30-19	22" ❖	A30-22
20" ❖	A30-20	24" ❖	A30-24
21" ❖	A30-21	27" ❖	A30-27

Size	Code #	Size	Code #
19"	A040-19	22"	A040-22
20"	A040-20	24"	A040-24
21"	A040-21	27" ❖	A040-27

Size	Code #	Size	Code #
19"	A76-19	22" ❖	A76-22
20" ❖	A76-20	24" ❖	A76-24
21" ❖	A76-21	27" ❖	A76-27



Beige Polythermal - Burnishing
(best used on machines up to 3000 RPM)

Stands up to propane burnishing; yields very, very high-gloss finishes on soft/medium surfaces



Blue Natural Hair - Burnishing
(best used on machines up to 3000 RPM)

Blend of blue polyester and natural hair fibres; produces the wet look on soft/medium finishes



Peach - Burnishing, HS, Auto Scrubbing
(best used on machines up to 1500 RPM)

Use on all types of floor finishes; use with an Auto Scrubber, for daily HS work or spray buffing

Size	Code #	Size	Code #
19" ❖	A16-19	22" ❖	A16-22
20" ❖	A16-20	24" ❖	A16-24
21" ❖	A16-21	27" ❖	A16-27

Size	Code #	Size	Code #
19" ❖	A19-19	22" ❖	A19-22
20" ❖	A19-20	24" ❖	A19-24
21" ❖	A19-21	27" ❖	A19-27

Size	Code #	Size	Code #
19" ❖	A23-19	22" ❖	A23-22
20" ❖	A23-20	24" ❖	A23-24
21" ❖	A23-21	27" ❖	A23-27

❖ Non-Stocked Item Requires Special Order



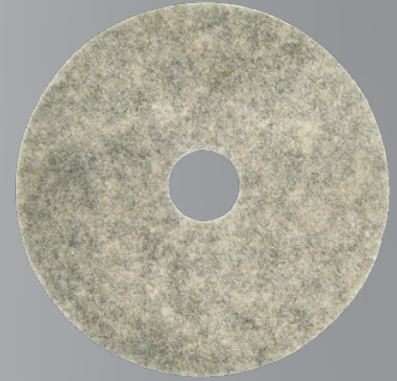
High Speed & Specialty Floor Pads



Hair Blend Light - Burnishing
(best used on machines up to 3000 RPM)
Controlled blend of polyester and natural hair fibres; yields a “wet look” finish



Hair Blend Medium - Burnishing
(best used on machines up to 1500 - 3000 RPM)
Aggressive, heavy blend of natural hair and polyester fibres; best suited for medium/hard finishes



Hair Blend Heavy - Burnishing
(best used on machines up to 3000 RPM)
The most aggressive Burnishing Pad available; provides a “wet-look” shine

Size	Code #	Size	Code #
19"	A21-19	22" ❖	A21-22
20"	A21-20	24" ❖	A21-24
21" ❖	A21-21	27" ❖	A21-27

Size	Code #	Size	Code #
19"	A20-19	22" ❖	A20-22
20"	A20-20	24"	A20-24
21"	A20-21	27" ❖	A20-27

Size	Code #	Size	Code #
19"	A22-19	22" ❖	A22-22
20"	A22-20	24" ❖	A22-24
21"	A22-21	27" ❖	A22-27



TurboStrip™ Segmented Rotary Pad

- Patent pending, proven technology to give you up to 5x faster finish removal than a standard black strip pad
- Features 24 polygonal segments with overlapped angular edges that bite into floor wax aggressively
- Dramatically reduces excess floor wax on strip pads; increasing pad life while the floor stripping work is completed faster

Size	Code #	Size	Code #	Size	Code #
16" ❖	7416	18"	7418	20"	7420
17"	7417	19"	7419		

Emerald Hy-Pro Floor Pad

- Maximum abrasive content, tear resistant and long wearing
- 5/8" thick; it's the toughest pad
- Wide open mesh construction allows solutions to flow through without build-up

Size	Code #	Size	Code #
17" ❖	A66-17	19"	A66-19
18" ❖	A66-18	20"	A66-20

Razorback Black Super Strip Floor Pad

- Highly abrasive and tear resistant with heavy duty stripping power; unique fibre blend for durability
- Open weave design allows flow-through without build up and loading

Size	Code #	Size	Code #	Size	Code #	Size	Code #
11" ❖	A62-11	14" ❖	A62-14	17" ❖	A62-17	20"	A62-20
12" ❖	A62-12	15" ❖	A62-15	18" ❖	A62-18	21" ❖	A62-21
13" ❖	A62-13	16" ❖	A62-16	19" ❖	A62-19		

Maroon Thin Line Floor Pad

- General purpose conditioning pad designed to smooth, clean and for the general surface conditioning of wood floors
- Use between coats during floor finishing
- Thin Line Pads are 3/8" thick; best used with 175 - 300 RPM machines

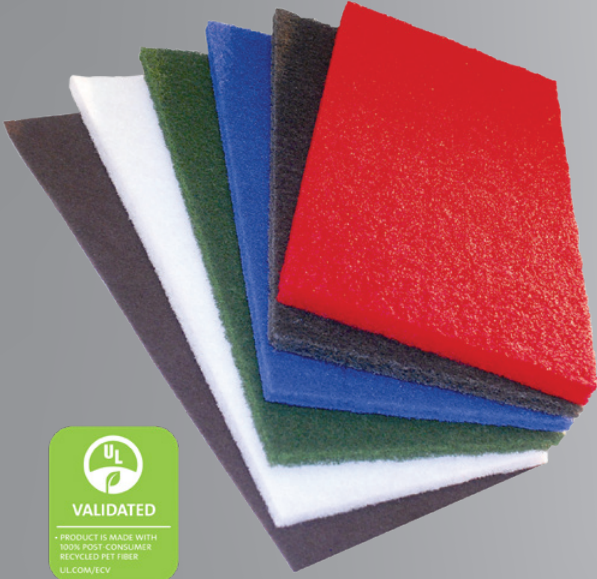
Size	Code #	Size	Code #	Size	Code #	Size	Code #
11" ❖	4711	14" ❖	4714	17" ❖	4717	20" ❖	4720
12" ❖	4712	15" ❖	4715	18" ❖	4718	21" ❖	4721
13" ❖	4713	16" ❖	4716	19" ❖	4719		



• PRODUCT IS MADE WITH 100% POST-CONSUMER RECYCLED PET FIBRE
UL.COM/ECV



Specialty Floor Pads

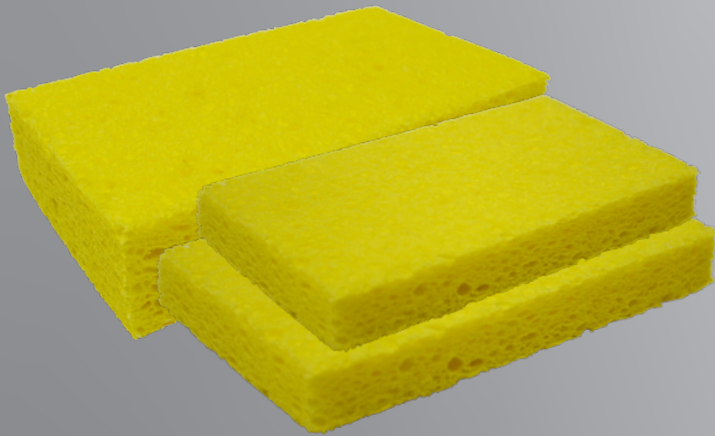


Rectangular Floor Pads

- These pads are built to perform at a high level when used with the action of orbital machines
- Available in White for polishing, Red for buffing, Blue for cleaning, Green for scrubbing, Black for stripping and Maroon Thin Line for surface conditioning/ stripping

Code	Description	Code	Description
4112-18	❖ White 12" x 18"	5112-18	❖ Red 12" x 18"
4114-20	❖ White 14" x 20"	5114-20	❖ Red 14" x 20"
4114-28	❖ White 14" x 28"	5114-28	❖ Red 14" x 28"
4114-32	❖ White 14" x 32"	5114-32	❖ Red 14" x 32"
5312-18	❖ Blue 12" x 18"	5512-18	❖ Green 12" x 18"
5314-20	❖ Blue 14" x 20"	5514-20	❖ Green 14" x 20"
5314-28	❖ Blue 14" x 28"	5514-28	❖ Green 14" x 28"
5314-32	❖ Blue 14" x 32"	5514-32	❖ Green 14" x 32"
7212-18	❖ Black 12" x 18"	4712-18	❖ Maroon 12" x 18"
7214-20	❖ Black 14" x 20"	4714-20	❖ Maroon 14" x 20"
7214-28	❖ Black 14" x 28"	4714-28	❖ Maroon 14" x 28"
7214-32	❖ Black 14" x 32"	4714-32	❖ Maroon 14" x 32"

Hand Pads



Cellulose Sponges

- Industry standard sponges
- Ideal for various working conditions
- Reinforced fibres to promote a long life
- Rinse and clean easily for repeated usage
- 661 Utility Sponge Dimensions: 6" L x 3.375" W x 0.875" H
- 663 Medium Sponge Dimensions: 6" L x 4" W x 1.5" H
- 665 Large Sponge Dimensions: 7.25" L x 4.25" W x 1.75" H

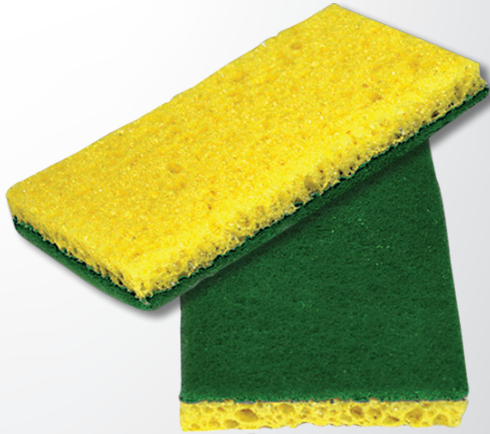
Code	Description
661	❖ Yellow Utility Sponge
663	Yellow Medium Sponge
665	Yellow Large Sponge

Scrubbing Sponges

- This versatile cleaning tool combines a nylon cleaning or scouring pad with an absorbent cellulose sponge
- No rust or stains, easy on hands
- Can be washed for reuse; absorbent for fast wipe up
- Scrub with one side and wipe with the other
- Combine with cleaning solutions for faster action
- Dimensions: 6.25" L x 3.625" W

Code	Description
74C	Regular Duty Green/Yellow
63C	Light Duty White/Yellow
63614	Light Duty White/Yellow

Hand Pads



Polyurethane Medium Scrubber Sponge

- Yellow polyurethane sponge with medium duty green pad for economical cleaning
- Poly sponge is more hygienic; does not dry out
- Individually wrapped
- Dimensions: 6" L x 3.375" W x 0.75" H

Code	Description
SC300	Green/Yellow

Halves White Scrubber Sponge

- Yellow polyfoam sponge with light duty white pad
- Antimicrobial treated; moist and individually wrapped
- No rust or stains, easy on hands
- Dimensions: 3.5" x 3.5"

Code	Description
PY400	White/Yellow

Dubble Scrubble Scouring Pad

- Two-sided, non-woven hand pad
- White light-duty side is great for delicate surfaces that can scratch easily such as Teflon®, Silverstone®, Plexiglas® or other sensitive surfaces
- Green medium duty side is great for scrubbing pots & pans or tough stains that need extra power
- Hourglass shaped to fit your hand's grip
- Curved ends to reach inside round corners
- Manufactured using UL® validated 100% PET recycled pad material

Code	Description
DS40	Green/White

Hand Scouring Pads

- Features make maintenance cleaning more efficient, saving time and expensive labour costs
- Non-metallic, no rust stains or splinters
- Resilient open web design
- Can be washed out for reuse
- Conforms to cracks and crevices on surfaces being cleaned
- Dimensions for all scouring pads: 9" L x 6" W

Code	Description
96A	Regular Duty, Green
96C	Regular Duty, Green
86B	Heavy Duty, Green
98604	Light Duty, White

Hand Size Light Duty Scouring Pad

- Non-abrasive pad; it is tough but gentle
- Will not cause scratches
- Specially designed for cleaning porcelain, ceramic, fine china and other delicate surfaces
- Dimensions: 3.5" L x 6" W

Code	Description
90030	White



• PRODUCT IS MADE WITH 100% POST-CONSUMER RECYCLED PET FIBER
UL.COM/ECV

**Over 100 Million Bottles
Recycled Annually in our Non-Woven Pads**



Advantage[®]
Maintenance Products Ltd.

1-800-265-9957 • orderdesk@advantagemaint.com • advantagemaint.com